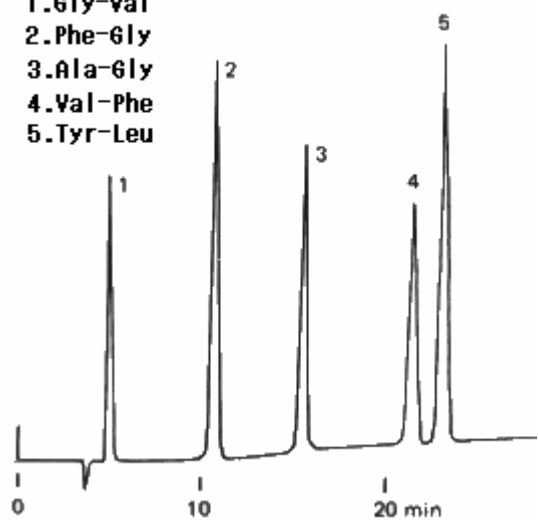


**Sample: Dipeptides**

- 1. Gly-Val
- 2. Phe-Gly
- 3. Ala-Gly
- 4. Val-Phe
- 5. Tyr-Leu



Column : Shodex RSpak DE-613 (6.0mmID\*150mm)  
Eluent : (A); 0.05% TFA aq./CH<sub>3</sub>CN=96/4  
(B); 0.05% TFA aq./CH<sub>3</sub>CN=75/25  
Linear gradient: 0 to 30min, (A) to (B)  
Flow rate : 1.0mL/min  
Detector : UV(220nm)  
Column temp. : 30°C